

By: Ruth Herron
To: LSCP Sub-Committee
Subject: Annual report of Canterbury City and Country LSCP to the POC Sub-Committee
Classification: Unrestricted

Summary: This report provides background information on the Canterbury City and Country LCSP, it details progress made in establishing and embedding the processes and work of the Partnership including developing links with other community partners and how progress is being made towards achieving key priorities as detailed in the local Children and Young People’s Plan.

1. Introduction

- 1.1 This report contains:
- A detailed description of Canterbury City and County’s LCSP
 - Information regarding the management, structure and effectiveness of the partnership, including the impact on schools’ results.
 - The LCSP Priorities and Action Plans, and
 - Feedback from each partner agency.
-

2. LCSP Description

- 2.1 Canterbury City and Country is one of the largest LCSPs covering the City and surrounding Country areas. The young people’s population is detailed below.

| | Total persons | | Males | | Females | |
|----------------------|---------------|------------|--------|----|---------|----|
| | Number | % of 0-19s | Number | % | Number | % |
| All ages 0-19 | 17,728 | | 9006 | 51 | 8722 | 49 |
| 0-5 | 4,068 | 23 | 2168 | 12 | 1900 | 11 |
| 0-7 | 5443 | 31 | 2875 | 16 | 2568 | 14 |
| 8-13 | 4576 | 26 | 2352 | 13 | 2224 | 13 |
| 14-19 | 7709 | 43 | 2779 | 21 | 3930 | 22 |
| 10-17 | 7,247 | 41 | 3823 | 22 | 3424 | 19 |

- 2.2 The LCSP has a varied landscape with extremes of affluence and deprivation. The Partnership ranks as equal 10th most deprived of the 23 Partnerships in

Kent. Northgate is the most deprived ward in the district and falls into the highest 5th of deprived ranking wards in the local authority. Little Stour, Marshside, Sturry North, Sturry South and Westgate lie just behind Northgate.

- 2.3 The Partnership has 29 mainstream schools, 3 Special schools and 1 Academy. Of the 28 schools there are 22 Primary schools (4 of which are federated), 1 Infant school, 1 Junior school, 3 Grammar schools, 1 Faith based wide ability secondary, 1 Technology wide-ability secondary, and 1 High school. Of the primaries, there are 4 that are sited in fairly deprived locations. Over half of the primary schools are in a rural location, with 6 having school roles of less than 100 pupils. There are 4423 children on the roll in the City's Primary schools and 6345 in the Secondary schools. Children with special educational needs make up 24% (N=2700) of the total school population with 4% having a statement of special educational needs and 20% having additional needs with no statement.
 - 2.4 The City has 1 Further Education College and the Secondary Schools are starting to work with the college in collaboration to allow pupils to access courses in each other's schools or the college. There are 3 universities; Christchurch University particularly works collaboratively with schools.
 - 2.5 There are 37 Early Years Settings (Pre-Schools) and 3 Children's Centres, with an additional 2 Children's Centres in the planning stages.
 - 2.6 The Partnership has a predominantly white British population. BME make up 8% (n= 700). Pupils with English as an additional language made up 7% (n=700) of the overall pupil population. Over the past year there has been a slight increase of 0.4% between in the percent of children from ethnic minority backgrounds. Parents of these young people may be health professionals at the hospital, parents studying at the universities, or soldier fathers based at Howe Barracks and a proportion of these children are bilingual and speak English fluently. However, a minority of the young people will be new arrivals to Britain with very little English, and for the majority the stay is fairly transient, the average time being 2-3yrs. Hence whilst numbers are small the impact on services is significant and continuous. Canterbury ranks 4th in the Kent districts for numbers of migrant workers.
 - 2.7 In the district there are 76 looked after children (February 09), and 82 (July 08) unaccompanied asylum seeking young people.
 - 2.8 There are 111 children (Februray 09) in the district who have Safeguarding Plans in place.
 - 2.9 The number of teenage pregnancies has risen slightly during 2007 in line with national data, despite this Canterbury district has successfully reduced teenage pregnancy by 21.5% on baseline data of 1998 and has achieved one of the best reductions in the county.
 - 2.10 Canterbury district has approximately 100 young carers
-

3. Management, Structure & Effectiveness of Partnership

3.1 Membership of the Partnership is set out in Appendix A, links to community groups in Appendix B and LCSP Team and Management Structure is Appendix C. The Partnership has recently developed a commissioning sub group. All commissioning decisions are taken through the board with the acknowledgement that some funding streams are rings fenced and must be directed to specific actions e.g. Hands on Support funding is for development of Information Communication Technology (ICT) in schools. The 2009/10 finance report is detailed at Appendix D.

3.2 **Vision and Strategy:** The Partnership has fully completed its local Children and Young People Plan which clearly sets out the vision for 'improved outcomes for young people through joint planning and commissioning of all Childrens services'. The progress of the plan is revisited at each Board meeting and the report card is set out in Appendix E.

3.3 Effectiveness of the Partnership

3.3.1 The LCSP board has now met four times and is still fairly embryonic, there was a delay with the Partnership and plan development as little preparation had been done towards this before the appointment of the Partnership Manager in September, but the LCSP is developing cohesively and partners are committed to striving to make this work.

3.3.2 Leadership is clear from the Partnership Manager and from Board members towards their individual organisations. Board members are nominated accountable leads against actions in the Local Children and Young Peoples Plan (LCYPP). Attendance at Partnership events and meetings is good and partners including schools are enthusiastic about working on projects and initiatives together.

3.3.3 Links are being made with all community groups to ensure there are effective communication pathways. There is clear communication with schools, the Partnership Manager attends the head teacher meetings held three times a year and there is good education representation on the board. This year the Partnership plans to develop better links with all voluntary groups to raise awareness of the role of the LCSP and for each to build a better knowledge of commissioning processes. The LCSP has had a strong role in the embedding of Integrated Working Processes such as Common Assessment Framework (CAF) processes and Single Point of Access (SPA) Meetings.

3.4 The effectiveness of the partnership in raising standards in Canterbury City and Country Schools

3.4.1 At **Foundation stage** in 2008, 43% of pupils attain the target of 78points + (inc. 6+points in Personal Social Emotional and Communication Language and Literature. Other Kent Partnerships scores range from 69 to 33% and Canterbury City and Country are 16th in the Kent Partnership table.

3.4.2 The Government expectation for **Key Stage One** is that children, aged between 5 and 7 years, will reach a minimum of Level 2B. The table below shows the LCSP Key Stage One attainment levels between 2006 and 2008.

| | 2006 | 2007 | 2008 | 2008 Partnership Rank (out of 23) |
|-------------------|------|------|------|-----------------------------------|
| Reading Level 2B+ | 65.5 | 67.3 | 67.4 | 19th |
| Reading Level 3+ | 26.8 | 26.4 | 26.3 | |
| Writing Level 2B+ | 54.6 | 55.2 | 55.1 | 18th |
| Writing Level 3+ | 14.9 | 10.9 | 10.5 | |
| Maths Level 2B+ | 68.4 | 76.3 | 72.9 | 17th |
| Maths Level 3+ | 14.9 | 10.9 | 10.5 | |
| Science Level 2+ | | | 86.7 | 20th |
| Science Level 3+ | | | | |

3.4.3 There are 5 schools that are particularly challenged in attaining floor targets, these are Hersden, Pilgrims Way, Boherne, Kingsmead and Diocesan & Payne Smith. At least 30% of pupils in each of these schools have additional educational needs. These schools are all on specific programmes and receive additional targeted support to raise attainment.

3.4.4 The rankings do not reflect the progress of the schools within the Partnership. There has been a small increase in basic reading skills in the past 2 years and the Partnership has work to do here as it remains at the lower end of all Partnerships ranking. Writing is behind the Kent average however the gap is closing and over the past 2 years has reduced from 5.4% to the Kent average of 2.9%. Maths has particularly improved from being 4.6% behind Kent to 1.1%. The Partnership lies 16th in the ranking for Average Point Score, which is a combination of all subjects at primary school age.

3.4.5 At Key stage 1 the overall Average Point Score for reading, writing and mathematics in the Partnership is 14.5. Other Partnerships score from 13.6 and 16. Canterbury City and Country ranks 16th in the Kent Partnerships.

3.4.6 The Government expectation for **Key Stage Two** is that children, aged between 7 and 11 years, will reach a minimum of Level 4+. The table below shows the LCSP Key Stage Two attainment levels between 2006 and 2008.

| | 2006 | 2007 | 2008 | 2008 Partnership Rank (out of 23) |
|------------------|------|------|------|-----------------------------------|
| English Level 4+ | 74.1 | 78.6 | 72.3 | 19th |
| English Level 5+ | 30.6 | 34.8 | 23.7 | 20th |
| Maths Level 4+ | 71.4 | 76.1 | 73.2 | 17th |
| Maths Level 5+ | 32.3 | 34.0 | 28.8 | 13th |

| | | | | |
|------------------|------|------|------|------|
| Science Level 4+ | 83.7 | 88.7 | 80.7 | 16th |
| Science Level 5+ | 43.2 | 49.1 | 36.3 | 13th |

- 3.4.7 701 of 703 pupils took KS2 SATs in 2009 in City and Country Schools.
- 3.4.8 In English there have been decreases in pupils gaining both 4+ and 5+ and the Partnership sits behind the Kent average by 5% at level 4 and 5% at level 5. Maths demonstrates a slight decrease in achievement 4+ and 5+ is only 1% behind the Kent averages. The trend for science demonstrates a similar picture. One of the issues for City schools is the high mobility of pupils, especially children with parents in the Armed Forces who may move in or out of schools shortly before the exams, this therefore distorts the real picture of the effort of schools. This mobility issue and the special school prevalence influence the picture for Average Point Score and the Partnership lies 20th in the Kent league.
- 3.4.9 There are programmes in place to challenge and support schools to improve attainment with a specifically locally designed maths programme to address the mobility issue.
- 3.4.10 At **Key Stage Four**, 98.4% of young people, aged between 14 and 16 years, achieve at least one GCSE pass or equivalent; 71.9% achieve 5+ A-C GCSEs; and 55.3% attain A-C GCSEs including English and Maths. The National Challenge directs that all schools should have a minimum of 30% of young people attaining 5 A-C GCSEs including English and Maths. Two schools in the Partnership, Chaucer and Canterbury High are National Challenge Schools as criteria was taken from 2008/9 data, however on 2009/10 both schools did achieve over 30%.
- 3.4.11 At **Key Stage Five**, stay on rates are good with 71% moving from Yr 11 to 12 in 2007, this interprets as the 5th highest partnership of the 23, and of these 82% will stay on into Yr 13, 6th highest of the Partnerships.
- 3.4.12 **Overall**, there are 1695 pupils classified as *gifted and talented* which represents 16% of the total roll (Jan 2008), there is focus on these children and cross-school working to support them to real their maximum potential.
- 3.4.13 OFSTED outcomes for schools are detailed in Appendix E

3.5 The effectiveness of the partnership in reducing absenteeism

- 3.5.1 Improving attendance is an absolute priority and an action in the LCSP Children and Young Peoples Plan. The Partnership has equivalent of three full time Education Welfare Officers.
- 3.5.2 Attendance data (excluding the Academy) for school year 2007 – 2008 is as follows:
- Kent Primary overall absence 5.5% (06/7 was 5.1%)
 - Canterbury City and Country 5% (06/07 was 5.4%)
 - Kent Secondary overall absence 7.5% (06/07 was 8%)

- Canterbury City and Country 8.1 (06/07 was 8.3%)
- Kent Special school absence data not yet available for 2008 (06/07 was 9.3)
- Canterbury City and Country 06/7 19.1% (05/6 was 16)

3.5.3 Generally, absenteeism is reducing, except for the Special Schools. Children attend the Special School from a wide geographical area and lose time when attending medical appointments. The Education Welfare Service is working closely with the schools and is implementing strategies to improve this.

3.6 The effectiveness of Children's Centres in Canterbury City and Country Partnership

3.6.1 The Riverside Surestart Centre is fully established and offering a wide range of outreach services. The Wincheap Centre opened to the public in January with its formal opening planned for May. Hersden has been set back as the site has moved from the Community Centre to the school site. A feasibility study is taking place at this time but full Children's Centre activities are on offer from an outreach perspective, many of which run from the Community Centre. The round three Children Centres will hopefully be sited at Chartham, on the school site, and at Littlebourne, the site for the latter has yet to be agreed. There are at present two managers and a third manager post for the Round 3 Centres is out to advert at this time

3.7 The Partnership Team

3.7.1 There are 29 members in the core Partnership team; the job roles of whom are detailed in Appendix C. The Partnership is starting to develop wider working practices with joint projects between Children's Centres, early years teaching staff and the voluntary sector. The team managers have enthusiastically taken on responsibilities for targeted action in areas within their age bands, such as Targeted Youth Support and developing a broad approach to raising standards in Early Years Settings.

4. Canterbury City and Country LCSP Priorities and achievement

4.1 The latest version of the LCSP Children and Young Peoples Plan can be accessed at: http://www.kenttrustweb.org.uk/Clusters2/cl_canterbury_cc_trust_management_pol.cfm

4.2 Overarching priorities

4.2.1 Priorities for the Partnership have been written with reference to the Every Child Matters Agenda. The local priorities were developed based on the results of the Needs Assessment. Below each of the priorities sit several strategic actions. Fundamentally the plan reflects the priorities of the 2008-11 Kent Children's and Young Peoples Plan this is identifiable by the brackets.

4.2.2 The plan has been traffic light rated as follows:

- **Green - good progress, actions/services in place**
- **Amber- formative discussion and plans in place**
- **Red - No progress yet**

4.3 LCSP Priority 1

4.3.1 The first priority of the LCSP is to: Provide easy access to support and advice to allow all young people and parents to have opportunity to make positive and informed choices about their health (KCYPP priority 1 & 2, Every Child Matters(ECM) Be Healthy) **Green/Amber**

4.3.2 Objectives:

- Promote healthy lifestyles
- Increase early intervention
- Improve sexual health
- Reduce drug and alcohol issues

4.3.3 Actions:

- A common PSHE curriculum is in the process of being developed across all schools in the Partnership.
- All schools are part of the Schools Sports programme and offering a wide variety of sports activities.
- The national Change for Life healthy lifestyle/healthy weight programme is being promoted in schools.
- Health clinics have been implemented weekly in all secondary schools offering advice, services and signposting on sexual health, contraception and drugs and alcohol issues.
- The teenage pregnancy local implementation group has commissioned a direct focused support worker for young parents to support parenting, reduce second pregnancies and engage in training/employment opportunities.
- Drug and Alcohol Peer mentoring programmes have been commissioned in all secondary schools.
- Canterbury was in the second wave of implementation of the Common Assessment Frames work and Lead professional, these programmes are now embedded in local work.
- The Multi Agency Cascade Service is Canterbury's early intervention health programme and continues to be supported to offer an excellent source of support working between schools and parents/carers on tier 1&2 mental health issues and Behaviour and social problems.
- Front line staff are being training on Pathways to support to increase early intervention.
- Information Z cards have been developed by young people for young people to signpost to them support and advice on a range of personal issues.

4.4 LCSP Priority 2

4.4.1 The second LCSP Priority is to: Provide education and support to families and young people to reduce vulnerability to accidents and abuse (KCYPP priorities 2, 3 & 8, ECM Stay Safe) **Green/Amber**

4.4.2 Objectives:

- Reduce incidents of road accidents
- Reduce the number of accidents to children and young people in the home
- Reduce the impact on children of domestic violence
- Increase early support for parents and families to reduce child protection referrals
- Prevent homelessness in vulnerable groups of young people

4.4.3 Actions:

- Schools are starting to support and reinforce messages of the national Tales of the Road safety campaign.
- All early years settings have given out free home safety packs including information about free fire alarm fitting.
- The domestic violence forum held an excellent education/awareness raising conference for front line staff.
- Training is planned to operational staff regarding the wide-ranging support for families to ensure swift and easy access to support to reduce hard end child protection referrals.
- Parentline, a national help and support line for parents is being promoted in all GP surgeries with information leaflets on living with teenagers, managing risky behaviour etc.
- There is now a parent voice coordinator in place to collate the views of parents/carers of services and support with focus on the most vulnerable groups.

4.5 LCSP Priority 3

4.5.1 The third LCSP Priority is to: Increase readiness and access to learning to raise attainment, employability and opportunity for economic independence (KCYPP priorities 5, 6 & 7, ECM Enjoy and Achieve) **Green**

4.6 LCSP Priority 4

4.6.1 The fourth LCSP Priority is to: Ensure all young people have fair and easy access to leisure and play activities (KCYPP priorities 5, 6 & 7, ECM Enjoy and Achieve) **Green**

4.6.2 Objectives:

- Increase positive and educational activities for pre school children
- Raise attainment in schools
- Looked after Children have access to additional help and support

- Embrace equality and diversity
- Parents are supported in parenting their children and have simple pathways to early support
- Young carers have access to support
- Increase positive opportunities for young people

4.6.3 **Actions:**

- There are 3 children's centres in place with an additional 2 round 3 centres in the planning stages developed, they are rapidly working towards the full core offer
- Extended schools are developing with just 6 schools not yet delivering the full core offer. This has allowed an extensive range of breakfast and afterschool places.
- The Partnership is oversubscribed for pre school places although commissioning continues to shape services in relation to what parents say they need
- There is a focus on adult education provision and a specific group for young parents has been developed
- Early years settings have been targeted to drive up standards to ensure all settings offer a high standard of childcare with training, resources and 1-1 support from educational staff
- There are a wide range of programmes in place to raise attainment and the Partnership developed Maths Mobility Programme has been adopted for County use
- The schools in the National Challenge programme have welcomed the support from the Kent National Challenge Team, all are making good progress
- A Partnership Strategy for children with additional educational needs is in the process of being developed and this will include outreach work from the Special school to mainstream schools to support them to manage children with complex needs
- Various leadership programmes are being supported with focus on the Aspiring leaders
- A focus on reducing absence and increasing inclusion has led to the development of an In Year fair Access policy at primary schools (well established in secondary schools) and the development of a zero absence policy for authorised absence and implementation of penalty notices
- There is a focus on transition with the development of a policy document detailing all transition arrangements, various programmes and activities are in place such as vulnerable children transition days, welcome weeks and specific materials for use by the children. A DVD has also been created about the reality of life at secondary school with information and top tips by students for children moving from primary to secondary school
- The third sector has been commissioned to engage the most vulnerable families who do not usually engage with schools and mainstream services to develop their relationships with their children, engage them in their learning and increase parenting skills
- The Partnership is supporting the development of a two-tier youth project to ensure activities are targeted at the right age group

- A wide range of services have been commissioned to support looked after children including promoting participation, support to schools to track and identify early problems in educational attainment, attachment awareness training for schools, a self esteem raising and relationship focussed residential for 16+ young parents, and specific resources for use in schools
- Schools receive 1-1 support to help integrate EAL children
- An audit of school processes and policy relating to anti bullying is in place
- A Needs Assessment is in place for Young Carers and a project to raise awareness in secondary schools was commissioned last financial year

4.7 LCSP Priority 5

4.7.1 The fifth LCSP priority is to: Increase participation of young people in local community planning of services (KCYPP priorities 7, ECM Make a Positive Contribution) **Green**

4.8 LCSP Priority 6

4.8.1 The sixth LCSP priority is to: Engender a sense of citizenship in young people (KCYPP priority 7, ECM Make a Positive Contribution) **Green**

4.8.2 Objectives

- Increase the numbers of young people who have valued skills and qualifications for employment
- Young People feel part of decision making both at school and in the community
- Promote volunteering opportunities for young people
- Reduce first time offending
- Engage children, young people and parents in the development of services through the LCSP

4.8.3 Actions

- The 14-19 agenda is being supported and embraced by the partnership with clear links to the forum.
- Young people are developing Young Peoples Charters with reference to their expectations when attending meetings as a young person representative.
- 7 young people were elected onto the Kent Youth Council and the Partnership is developing a youth panel as a sub group of the LCSP
- The Partnership supports the www.notbored.net website which signposts young people to activities.
- Specific Hot Topix events are in place twice a year to meet with young people, on their terms, to get their views and perceptions of services and support.
- The Youth Offending service has established the Youth Inclusion Panel and has a specific YISP worker that all organisations can refer to if concerned that behaviour is likely to lead to offending.

4.9 LCSP Priority 7

4.9.1 The seventh LCSP priority is to: Increase aspiration and enhance a sense of community in the most deprived areas (KCYPP priorities 1 & 4, Achieve Economic Well-being) **Green/Amber**

4.9.2 Objectives

- Establish young people on path to economic success
- Reduce the number of children living in poverty

4.9.3 Actions

- The partnership is developing a NEET/Targeted Youth Support Strategy. NEET figures are ahead of target for March 2009 being 4.13 against a target of 4.97
 - The most deprived wards have been targeted with youth projects to raise self-esteem, develop relationships between services and young people and develop and community cohesion
 - Training is planned for all those working with young people on the Kent Homelessness protocol to increase intervention before homelessness occurs
-

5. Information/Feedback from the individual agencies

5.1 Public Health

5.1.1 There are three health representatives; Caroline Friday is the Children's Commissioner for Canterbury and Swale. She is also the vice-Chair of the LCSP. Susan Gough is Head of Health Visiting and School Nursing Services for Canterbury. Whilst this is not formally supported by the Children's Commissioner Health (for Kent) the LCSP has taken the conscious decision of ensuring that there is a presence on the LCSP Board from the PCT's Provider Services. It justifies this on the basis of the huge professional expertise available within Provider Services, which is made real through day-to-day service delivery. Finally Dr Jonathan Sexton, the lead Consultant for Public Health for Canterbury and Swale has associate status. He has a particular professional interest in children's public health and provides the principal public health advice to the Children's Trust Board. He is also the principal author of the Kent Joint Strategic Needs Assessment for Children.

5.1.2 Between these three Officers, Health is constantly represented and largely all three representatives are able to attend together. Between the three representatives there are substantial resources and on-going work, which tends to drive much of the health elements of the LCSP plan. As a major partner and the largest on the LCSP outside the KCC family of services, the Health representatives are well able to contribute to the work of the LCSP.

- 5.1.3 There are substantial on-going funding commitments to children's health services. In addition for 2009/10 and covering all of Canterbury rather than the specific LCSP, £164,000 has been invested into the MaCS service, £25,000 for SNAAP and £125,000 for the Canterbury & Coastal Early Child Project - a partnership with the voluntary sector.
- 5.1.4 In addition the Canterbury LIG of the Kent Teenage Partnership is run chiefly through the facilitation of the PCT with a reporting relationship to both LCSPs. This has resulted in £9,000 being spent on this agenda. Through close and sustained working over a number of years, Canterbury has successfully reduced the rate of teenage pregnancy by the largest percentage (taking three year rolling averages) of any part of Kent.

Jonathan Sexton Public Health Consultant

5.2 Children's Health commissioning

- 5.2.1 The Health representative for City and Country LCSP is Caroline Friday, Locality Commissioning Manager, Child Health Commissioning Team, Caroline is currently the Vice Chair of this Board, and is a member of 3 other partnership Boards (Canterbury Coastal and Swale, Urban and Rural).
- 5.2.2 The attendance of LCSP Board meetings is considered a priority commitment. However there may be occasions where core PCT business is considered a higher priority.
- 5.2.3 The delegation of tasks and meeting partnership deadlines for completion of work can on occasions be problematic due to other priority work streams from both PCT and other partnership Boards. The role of 'Champion' against the identified priority areas can be misleading with partners, as it can imply that the Champion does the work. The framework is being developed to define Commissioning arrangements within the partnerships however at this stage it is unclear what resource is available to support the functions, in terms of expertise and administrative support.
- 5.2.4 The Health rep role with other partners is to ensure support and delivery of the LCYPP are clearly understood and firmly embedded throughout the local health sector, and that reports, procedures and decisions of LCSP are communicated and acted upon.
- 5.2.5 The health rep is available for consultation between Board meetings to facilitate and act on the core business of the LCSP, including highlighting to the Board key strategic issues. Key professionals within the health sector are invited to attend the Board meetings in an advisory capacity and also attend where appropriate sub groups in order to support the work of the LCSP.
- 5.2.6 The health rep identifies and insures that joint commissioning agreements between PCT's and KCC are in place and regularly reviewed and identifies opportunities for integrated commissioning to improve stronger partnership working and allocation of resources where appropriate.

5.3 Children's Social Services

- 5.3.1 Social Services have engaged fully in the Partnership with regular attendance at the board meeting by the District Manager and Family Services Manager. The opportunity to draw together data has provided a more holistic view of young people and presenting issues and clearly demonstrated how by improving early intervention child protection referrals can be decreased. Opportunities for cross organisation working have been in place for some time but the LCSP provides an excellent opportunity to develop this.

5.4 Education

- 5.4.1 I am the 'lead Headteacher' in the partnership, being the Headteacher at SLGGS in Canterbury. I am also the Chair of this LCSP and so feel very involved in all of the activities. I have been able to attend all of the meetings apart from the last one and we have had some resources to meet our stated needs in our plan, but that has only been funded by the education element (£30,000) and additional monies from Health (to fund school nurses, and Chlamydia screening etc.) Canterbury City Council are very active with their Play Strategy and associated activities but it has been difficult to 'attract' additional funding from Social Services. We are working with Allan Foster to adopt a consistent approach to the delivery of PSHEE in secondary schools across the partnership with all secondary schools being involved as outlined in our plan. We still hold regular Headteachers' meetings which are well supported – far better than when we were a cluster – and through these are developing many other consistent approaches – e.g. making a DVD about transition issues to be given to all children in Yr 6 before starting in this secondary school. We have been involved in working with the Early Years' Project at Poet's Corner to try to engage more parents in their children's learning. Overall, this year has seen a very positive start to the Canterbury City & Country LCSP.

Jane Robinson Headteacher and Chair of the Partnership Board

5.5 Police

- 5.5.1 The Police have actively engaged in the Partnership Boards. They have provided data, both written and anecdotal, which fed into the needs assessment. The LCYPP offers opportunity to have a targeted and joined up approach to tackling some of the challenges the police face, this includes working with the youth service for provision of diversionary services and positive activities to working with targeted schools to reduce road traffic accidents.

5.6 Youth

5.6.1 The Youth Service is an enthusiastic supporter and contributor to the Partnership. The service has taken on various provider responsibilities in response to the identified needs in the LCYPP. They have provided information and use information partners have provided to shape their services. The opportunity to share the knowledge and expertise within this provider service who meet so many young people has been invaluable. The Youth Service also host the Youth Action Group which has direct links to the Partnership.

5.7 Voluntary Sector and Other

5.7.1 My involvement with the Canterbury City & Country Partnership Board is to represent the Third Sector. Through the LCSP, a local Children and Young People's Plan has been developed with input from all members. During the development process, agencies and organisations began to more fully understand the many different ways that agencies and organisations meet the diverse needs of children and young people. This increased awareness and understanding of roles and responsibilities will now be a springboard in delivering the plan in a creative and consolidated way. I had been concerned about the dissemination of information to Third Sector organisations and with some of these organisations instigated establishing a protocol for this. A further consequence of membership of the Canterbury City & Country Partnership Board has been to resurrect the Children & Families Organisations Network Forum for the Canterbury District. Regular meetings will help ensure that there is good communication between the Third Sector organisations and the Board.

5.7.2 Establishing the Board and keeping the members on task cannot be an easy task! However, with good management, I do feel the Board has made a really positive start to collectively meeting the needs of children and young people

Canterbury Early Years Project

5.8 Connexions

5.8.1 Certainly being a part of the partnership has meant that the work that I do around NEETS and TYS is much better supported and this has spread the understanding and ownership of this work. The NEET/TYS group and its membership is an example of that.

Ann Furminger Connexions Manager

5.9 Youth Offending

5.9.1 The Youth Offending Service (YOS) has been represented on the Board since it was created. The Partnership has given us the opportunity to raise the issues of the young people under our supervision and to begin to address their specific needs. Additionally, the Partnership is working together to address performance targets that cut across a range of partners. These include most significantly reducing offending and reducing first time entrants into the Criminal Justice System. We have been happy to take the lead on

these priorities and have valued the support offered by the Board and its partners.

Barry Weeks Youth Offending Manager

5.10 Canterbury City Council

5.10.1 The Council officer has engaged positively with the partnership. She is an active member of the Board and has taken forward various initiatives on their behalf. The Council has been commissioned to provide the training on early intervention and homelessness and the LCSP has benefited from their processes in place to communicate with young people.

5.11 Extended Schools

5.11.1 The development of the Canterbury Local Children's Services Partnership has allowed Extended Services to work much more closely with other board members and their organisations on a range of focus areas both within and in addition to the CYPP. Since the LCSP was formed, the number of schools offering access to the full core offer has risen from 54% to 77%. The Partnership has supported the strategic delivery of Extended Services across all schools, and through this is helping to ensure that over time all families will have information about and access to the services they need within their communities.

5.11.2 We are working on a variety of projects that link into the CYPP, and in particular looking at how we can engage parents from all backgrounds. We are in the process of working with all members from the board in a joined up way to ensure we capture information from different agencies on their work with parents, and also do not waste resources by duplicating the same work. Extended Services have also put together a central directory of services available to the schools and settings, and this continues to have input from all board members to ensure it is as accurate and up to date as possible.

5.11.3 Two of the key success factors for Extended Services as identified by the DCSF are:

- A focus on looking at if there is a wide range of agencies including the voluntary sector, working in an integrated way to deliver Extended Services.
- If there long-term commitment of funding through effective joint commissioning arrangements with other agencies e.g. through local board commissioning with pooled funding.

5.11.4 I feel that the development of the Partnership Board, the commitment of its members and the leadership of the Partnership Manager are all supporting myself and my team to ensure these success factors are established and remain in place.

Steve Charman Extended Schools Manager

6. Conclusion

- 6.1 The Canterbury City and Country Partnership has made a good start in their aim to improve outcomes for children and young people by striving to develop the process of joint planning and commissioning for children's services. There is a clear strategy and aims are clearly identified. Integrated processes are establishing and partners are working together towards developing a cohesive children's workforce. The process of evaluation will identify what is working well. Processes are in place for communication and consultation with children and young people and this year it is anticipated that mechanisms will be in place for the voice of parents/carers. The work in 2009/10 with the voluntary sector will be beneficial to future commissioning.

Recommendations

Members of the LCSP Sub Committee are asked to note the report.

Case Officer

Tel No:

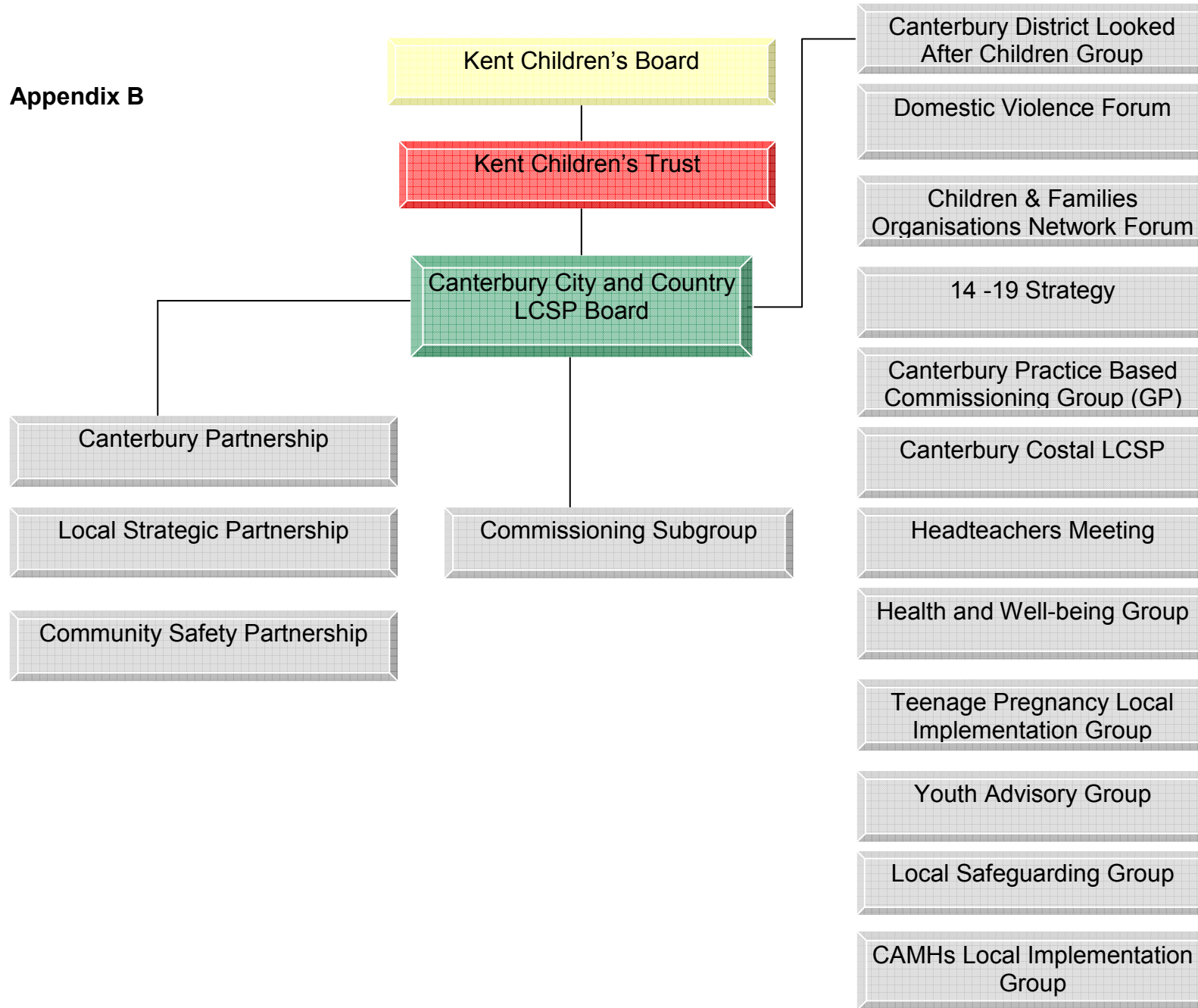
e-mail:

Background Information: *Include ALL background information taken into account in preparing the report. (This does not include previous Committee Reports)*

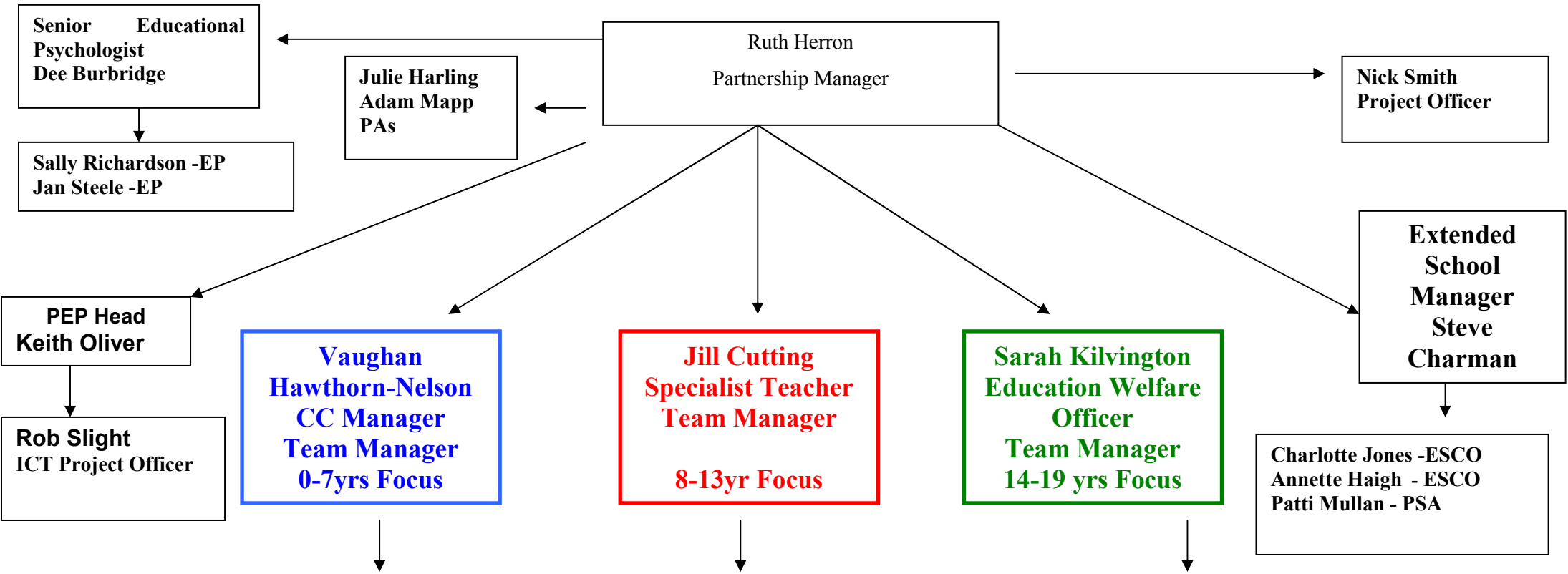
Appendix A

| Core Membership | Name & Job Title |
|--|---|
| Secondary Headteacher (Chair) | Jane Robinson Simon Langton Girls' Grammar School |
| Children's Social Services | Stephen Fitzgerald District Manager |
| | Pip Hazelton Team Leader |
| District Council Officer | Suzi Wakeham Head of Community Development |
| Early Years | Gill Mansfield St Stephen's Infant School |
| FE Provider/14-19 Sector | Ann Furminger Connexions |
| Health | Caroline Friday (Vice Chair) Local Commissioning Manager, C&YP's Health |
| | Susan Gough East Coast Kent NHS |
| | Jonathan Sexton Assistant Director of Public Health East Coast Kent NHS |
| Police | Garath Silcock@kent.pnn.police.uk Kent Police |
| Primary Headteacher | Graham Bissett Barham CE Primary School |
| Special School | Ros Eastwood East Kent Hospital School |
| Voluntary/Community Sector | Nicky Cole Canterbury & District Early Years Project Manager |
| Youth Offending Service | Barry Weeks Team Leader, KCC |
| Local Children's Services Partnership | Ruth Herron Partnership Manager |
| Area Children's Services Officer | Alison Osborne Area Children's Services Officer, KCC |
| Youth and Community Service | Jim Winters Area Youth Officer Canterbury and Swale |
| Extended Schools | Steve Charman Extended School Manager |

Appendix B



Management Structure for Canterbury City and Country Local Children Service Partnership



- 1. Liz Ross Pre-School Specialist Teacher, SEN
 - 2. Victoria Bailey Early Years Advisory Teacher
 - 3. Diana Strauss Early Years SENCO
 - 4. Ingrid Hillier Early Years SENCO
 - 5. Childcare Development Officer
 - 6. CC staff (Wincheap/Hersden)
- In team but not line managed
- CC Staff Riverside
 - CC Staff Chartham
 - CC Staff Littlebourne

- 1. Barbara Hourigan STS, Behaviour
 - 2. Gill Adams STS, Bi-Lingual & Ethnic Minorities
 - 3. Margaret Young STS, Cognition and Learning
 - 4. Pete Findley STS, Communication and Interaction
- In team but not line managed
- Jan Steele Educational Psychologist
 - Sally Richardson Educational Psychologist
 - Rob Slight ICT Project Officer

- 1. Sue Browne Education Welfare Officer
 - 2. Lee Kennedy Education Welfare Officer
 - 3. Joanne Robinson Education Welfare Officer
- In team but not line managed
- Extended school team
 - Parent Support Advisor

Appendix D
Financial Report April 2008/9

| Funding stream | Amount | Action | Amount | Remaining |
|-----------------------|---------------|--|---|------------------|
| Partnership monies | 30,000 | <u>Early Years Safety packs</u> <u>Homeless protocol training</u> Pivotal leadership <u>Kingsmead youth project</u> <u>Z cards</u> Raising aspiration and developing community cohesion in target areas -Canterbury Youth cultural days -Youth service residential project -Youth holiday programme <u>Parentline plus leaflets for GPs</u> <u>Parentline leaflets for transition</u> Education staff -Supply cover to small schools for attending meetings -Room hire -Refreshments -Training courses -Meetings, headteachers, SENCOs, early years, Partnership team, transition projects, -Individual staff courses + resources Inset training day primary schools Guns and knives conference <u>Drug and alcohol peer mentoring programmes</u> | 2000 1000 1000 3000 1500 3000 4000 3000 1000 1000 3000 5000 400 1100 | 0 |
| Healthy schools | 10831 | Peer mentoring programmes in 7 secondary schools | 10831 | 0 |

| | | | | |
|-------------------------------|-------|--|------------------------------------|------|
| LCSP development | 4000 | Elephant kiosk | 3812 | 188 |
| Hardship | 1000 | Housing arrears Parent Bed and Breakfast costs | 500 130 | 370 |
| Innovation funding | 1000 | Transition booklets infant to junior | 700 | 300 |
| Young carers | 5000 | Secondary school young carers awareness raising projects | 4000 | 1000 |
| LAC funding | 12030 | Viewpoint project LAC coordinator School bids School resources Data analysis event | 2000 4000 5000 250 780 | 0 |
| Education ring fenced funding | | | | |
| Hands on support | 72500 | VLE project Transition DVD Digital videoing project | 72391 | 109 |
| EMAG | 69429 | Specialist teacher (18months) | 69429 | 0 |
| Primary Languages | 24060 | Lead teacher and resources | 24060 | 0 |
| Music | 25918 | Lead teacher release time Projects | 25918 | 0 |
| AEN inclusion | 16100 | TA support in schools | 3500 | |
| | | Cost of specialist teacher behaviour | 12600 | 0 |
| SEAL | 6686 | *Must be spent by August | 6686 | 6686 |

Appendix E

Being healthy

| | | |
|--|---|---|
| Promote healthy lifestyles and increase number of Healthy Schools | Promote activities and use the momentum related to 2012 Olympic games | A |
| | Develop a common PSHE curriculum across the Partnership Develop Healthy Schools ethos | G |
| | Support to the implementation of Social, Emotional Aspects of Learning (SEAL) initiative | R |
| | Increase walking buses Reinforce Change for life programme by using promo items in schools | A |
| | Increase access to activity sessions | G |
| | Financial support to enable access to healthy eating option at breakfast clubs | A |
| | Reinforce Change for life national programme through use of resources for home | A |
| Increase early intervention and implement integrated processes | Implementation of Single Point of Access and Lead Professional role Workshops to support community staff in schools and nurseries | G |
| | Maintain current delivery of MACS | G |
| | Commission a school nurse to offer confidential drop in sessions in all secondary schools and support school staff in the delivery of high quality sex and relationship education | G |
| | Play plus therapy in targeted schools | A |
| | Increase training on early intervention opportunities for operational front line staff | G |
| Improve sexual health | Implement the HPV vaccination programme | G |
| | Increase access to mentoring/support, confidential advice, and signposting by development and dissemination of Z cards and outreach sessions | G |
| | Support Implementation of the Teenage Pregnancy LIG action plan | G |

| | | |
|---------------------------------------|--|---|
| Reduce drug and alcohol misuse | Support the implementation of the Alcohol Support programme in Safe Communities Strategy (former CDRP) | G |
| | Drug education and awareness raising in schools and with other services working with young people | G |

| | | |
|--|--|---|
| Staying Safe | | |
| Improve children and young peoples road safety knowledge | Schools to support and reinforce Tales of the road national road safety campaign | A |
| Reduce the number of accidents to children and young people in the home | Increase and promote scheme for home safety equipment | G |
| | Ask Fire Service to target high risk areas with leaflet drop re promotion of free house fire alarms inc. fitting | R |
| Reduce the impact on children of domestic violence | Support the implementation of the Domestic Violence Strategy | G |
| Increase signposting to early support for parents and families to reduce child protection referrals | Training for staff to recognise support pathways available prior to SS referral | G |
| | Increase number of parenting support groups and engagement Mapping exercise to identify pathways to swift and easy access to support | A |
| | Promote Parentline materials in GP surgeries | G |
| Prevent homelessness in vulnerable groups of young people | Multi-agency training for youth workers on homelessness prevention and the Young Person's Homelessness Protocol | G |

| | | |
|---|--|---|
| Enjoy and Achieve | | |
| Increase positive and educational activities for pre school children | Development of appropriate and accessible childcare provision | G |
| | Implement Extended School and Children's Centre business plans with regard to development of parent and child activities | G |

| | | |
|---|--|---|
| | Ensure pre school children are well prepared for school | G |
| | Develop Transition Policy to cover all key stages of transition | G |
| | Targeted approach of support to vulnerable settings to raise PSE and CL | G |
| | Using a targeted approach implement the educational various programmes available. E.g. Reading Recovery | G |
| | Support the National Challenge Programme | G |
| | Build on outreach work from staff in Special Schools to mainstream schools Develop a LCSP strategic plan for AEN children | A |
| | Support leadership programmes including Pivotal Leaders, Aspiring Leaders and Leading from the Middle | G |
| | Implement In Year Fair Access in secondary and primary schools Implement policy of no authorised absence in all schools All schools to implement first day calling | A |
| | To reduce school exclusions schools | A |
| | | G |
| | Increase number of schools offering extended services | G |
| | Promote inclusion through identification and support to vulnerable pupils Schools to share effective practice | A |
| | Promote equality, support and opportunities for families with children with a disability | G |
| Looked after children have access to additional support and help | Commission one DT to support other schools | G |
| | Promote participation of LAC through employment of a teacher to visit all schools to identify why LAC do not complete Viewpoint | |
| | Promote Attachment Awareness training with free resources | |
| | Offer schools opportunity to bid in for funding for small projects | |
| | Analysis session of story behind the data | |

| | | |
|--|--|---|
| | Residential weekend for 16+ LAC with focus on raising self esteem and relationship education | G |
| Embrace equality and diversity | Integration of children who have English as an additional language (EAL) | G |
| | Audit of anti bullying initiatives across the Partnership whilst supporting implementation of present initiatives | A |
| Parents are supported in parenting their children and have simple pathways to early support | Implement Children's Centres with all delivering core offer | G |
| | Offer support on parenting to families/carers of vulnerable children/young people e.g. those involved in young offending | A |
| | Increase parental participation through family learning and support in schools | G |
| | Develop INNOVATIONS project – targeting support to Early Years settings through various projects | A |
| | Increase Wrap Around Childcare provision | G |
| Young carers have access to support | Commission Needs assessment to identify numbers of, and issues affecting, young carers | G |
| Increase positive opportunities for young people | Support the implementation of a two tier youth project | G |

| | | |
|--|---|---|
| Make a positive contribution | | |
| Increase the numbers of young people who have valued skills/qualifications for employment | Support implementation of 14-19 agenda | G |
| Young people feel part of decision making processes both at school and in the community | All schools to participate in NFER pupil survey | R |
| | All service provider/partnership meetings that are open to young people will produce a Young Peoples Participation Charter setting out expectations and clearly explaining the aim of the meeting | A |

| | | |
|--|--|---|
| Promote volunteering opportunities for young people | Implement KYCC Elections in Schools and Youth projects | G |
| | Develop LCSP Panel from School Councils to review LCSP Board items 2 x per annum | A |
| | Promote opportunities through schools, www.notbored.net and Kent togogo website | G |
| | Continue the Hot Topixs events | G |
| Reduce first time offending | Support establishment of Youth Inclusion Panel across the district Lead on the Prevent and Deter strand of the Priority Offender Strategy | G |

| | | |
|---|---|---|
| Achieve economic well-being | | |
| Establish young people on path to economic success | Focus on groups vulnerable to becoming NEET Support implementation of district Targeted Youth Support /NEET strategy | A |
| Reduce the number of children living in poverty | Target positive activities/support to the most deprived communities | G |
| | Implement Young Persons Homelessness Housing protocol to impact on vulnerable groups | G |
| Reduce the number of children living in poverty | Increase opportunities for adult training for parents | A |

Appendix E -OFSTED outcomes

In September 2008 Canterbury City and Country rank 12th out of 23 Partnership when the total of schools judged good or better are collated across the County, and the Partnership ranks 6th for Outstanding schools.

| School | Date of last Ofsted | Outcome | Ofsted due |
|---|----------------------------|------------------|-------------------|
| <u>Primary</u> | | | |
| Adisham CEP School | 25/04/2007 | Good | |
| Barham CEP School | 22/01/2008 | Good | |
| Beauherne Community Primary School | 20/09/08 | Satisfactory | |
| Blean Primary School | 25/09/2007 | Good | |
| Bridge & Patricxbourne CEP School | 08/07/2008 | Good | |
| Chartham Primary School | 10/01/2006 | Good | |
| Chislet CEP School | 23/05/2007 | Outstanding | |
| Diocesan & Payne Smith CEP School | 10/06/2008 | Good | |
| East Kent Health Needs Education Service | 13/06/2007 | Satisfactory | |
| Hersden Community Primary School | 1/10/08 | Special Measures | Yes |
| Hoath Primary School | 20/03/2007 | Good | |
| Kingsmead Primary School | 13/10/08 | Satisfactory | |
| Littlebourne CEP School | 10/09/08 | Good | |
| Orchard School, The | 1/10/08 | Satisfactory | |
| Parkside Community Primary School | 04/10/2006 | Satisfactory | Yes |
| Petham Primary School | 13/06/2007 | Satisfactory | Yes |
| Pilgrims' Way Primary School | 01/03/2009 | Satisfactory | Yes |
| St Nicholas' School | 12/07/2006 | Satisfactory | |
| St Peter's Methodist Primary School | 07/05/2008 | Outstanding | |
| St Stephen's Infant School | 11/12/2007 | Good | |
| St Stephen's Junior School | 1/10/08 | Outstanding | |
| St Thomas' Catholic Primary School | 17/06/2008 | Satisfactory | |
| Sturry CEP School | 04/07/2007 | Satisfactory | Yes |
| Wickhambreaux CEP School | 08/07/2008 | Outstanding | |
| Wincheap Foundation Primary School | 02/2009 | Satisfactory | |
| <u>Secondary</u> | | | |
| Canterbury High School, The | 20/09/08 | Outstanding | |
| Chaucer Technology School | 01/04/2008 | Satisfactory | |
| Simon Langton Girls' Grammar | 15/05/2007 | Outstanding | |

| School | | | |
|--|------------|--------------|--|
| Simon Langton Grammar School for Boys | 30/11/2005 | Good | |
| Barton Court | 11/3/09 | Outstanding | |
| St Anselm's Catholic School | 03/09 | Satisfactory | |